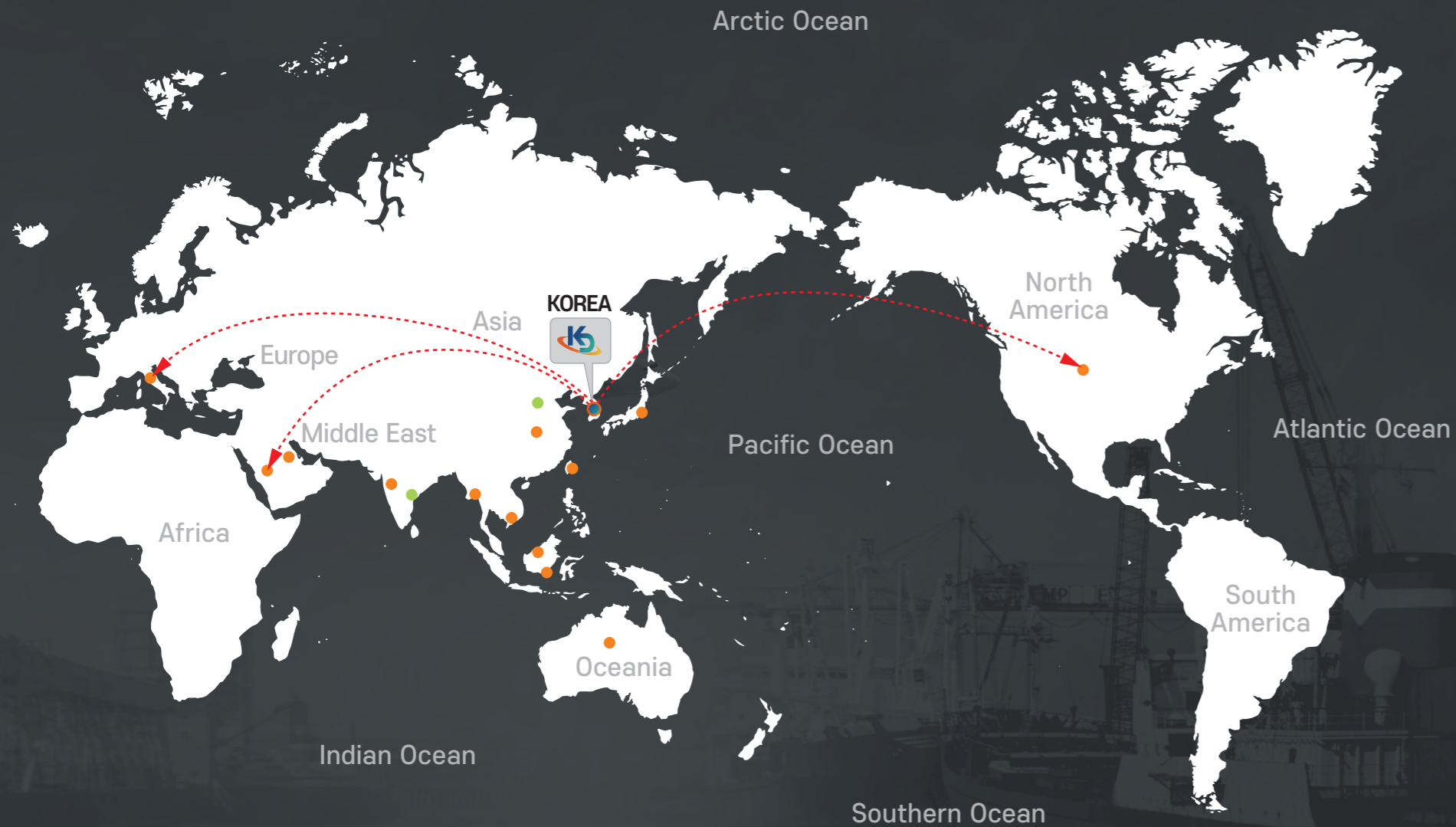


Company History

Date established	February 2, 1990 (Incorporated in 2004)
Main products	Supplied Air Respirators, Perspiration-free Safety Shoes, Occupational Personal Protective Equipment, Perspiration-free Footwear (Hiking shoes, Sneakers, etc.)
Certification	Quality and Management System <ol style="list-style-type: none">1. Registered as a manufacturer for Korea Certificate for Safety(KCs) approval type machinery/device2. Certified as a Venture Business by Korea Technology Finance Corporation(KTFC)3. Certified as a Management Innovative Business(MAIN-BIZ)4. Corporate affiliated R&D Center approved by Korea Industrial Technology Association(KOITA) and Ministry of Science and ICT(MSIT) of Republic of Korea5. Quality Management System(QMS) ISO 9001:2015 Certified6. Nominated as a 'Promising Small and Medium Enterprise in Export' by Ministry of SMEs and Startups(MSS) of Republic of Korea7. Designated as a Small Hidden Champion of Gimhae City
Patents & Trademarks	Total 87 cases of domestic and international patents (Ventilation Sole for Shoes, etc.) and trademarks as of 2018
Awards	<ul style="list-style-type: none">· Grand Prize at Safety Invention Contest for Industrial/Firefighting/Living awarded by Commissioner of Korean Intellectual Property Office in 2007· Grand Prize at the 16th Protection System & Equipment Quality Contest awarded by Minister of Employment and Labor in 2012· Official Commendation for Enhancement of Industrial Safety and Health from President of Korea Occupational Safety and Health Agency in 2013· Commendation for Exemplary Taxpayer from the head of district tax office in 2014



● Kyoungdo International Co., Ltd. overseas partner factory

● Kyoungdo Trading Company's main export countries

USA / Japan / China / Italy / Australia / Saudi Arabia / Malaysia / Indonesia / Taiwan / India / Vietnam / Myanmar

Contents

FULL FACE MASK	06
SUPPLIED AIR RESPIRATOR	10
PAINTING GOGGLES	15
AIR COOLING VEST	16
ERGONOMIC PRODUCTS	18
SAFETY SHOES	20
INFORMATION	29

“

The utmost core value
KYOUNGDO pursues is
HUMAN BEINGS!

”



01 FULL FACE MASK KD-550



01

FILM WIND TYPE

By turning a ratchet type film winding device a new clear view can be secured immediately and it helps prevention of safety accidents and production quality improvement



02

REPLACEABLE FILM FOR COST SAVING

Facepiece can be reused by replacing film and it can result in significant cost saving



03

IMPACT-RESISTANT & ANTI-FOG TREATED PC LENS

Hard-coated outside of the lens or anti-scratch and Anti-fog treated inside of the lens



04

COMFORTABLE FIT AND NON-TOXIC MATERIAL

Using Non-toxic TPR and offering comfortable fit



05

GAS AND COMBINED FILTERS

Using high quality activated carbon made in Japan to offer low respiratory resistance to workers help keep breathing well.

YouTube

KD-550 instruction video



KD-550

Film Winding Type Full face painting mask

- | **Application** : Painting works and etc.
- | **Applicable fields** : Various Industrial fields where organic vapors are generated, such as chemical plant, shipyards, steel mills, etc.
- | **Type** : Direct connection, full face covering, film winding & lens replacement type



▶ FILM WINDING TYPE



Contaminated Lens Part



Winding the Film



Clear View after Film Winding



KD-560

Lens replaceable type full face mask

| **Applicable fields** : Various Industrial fields where organic vapors are generated such as chemical plant, shipyards, steel mills, etc.

| **Type** : Direct connection, full face covering & lens replacement type



 Super Ultra-light Weight
338g only

▶ LENS REPLACEMENT TYPE



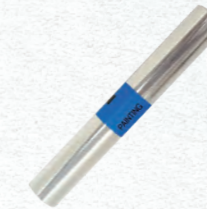
*** ACCESSORIES FOR FULL FACE MASKS

Lens



| **Material** : Polycarbonate (**Inside**_ Anti-fog treated / **Outside**_ Hard coated)
| **Application** : Eye protection | **Size(WxL)** : 110x192(mm) | **Thickness** : 1.0T

Film(KD-550 only)



| **Thickness** : 50µm | **Width** : 110mm
| **Length** : 2.4m (Approx.12cuts/roll)

Cartridge



KD-OL
Gas filter, Low capacity,
Organic Gases & vapour
KCs, CE/UKCA(A1)



KD-OLD1
Combined filter, Low capacity,
Organic Gases & Vapour Medium Filtration (94%)
KCs

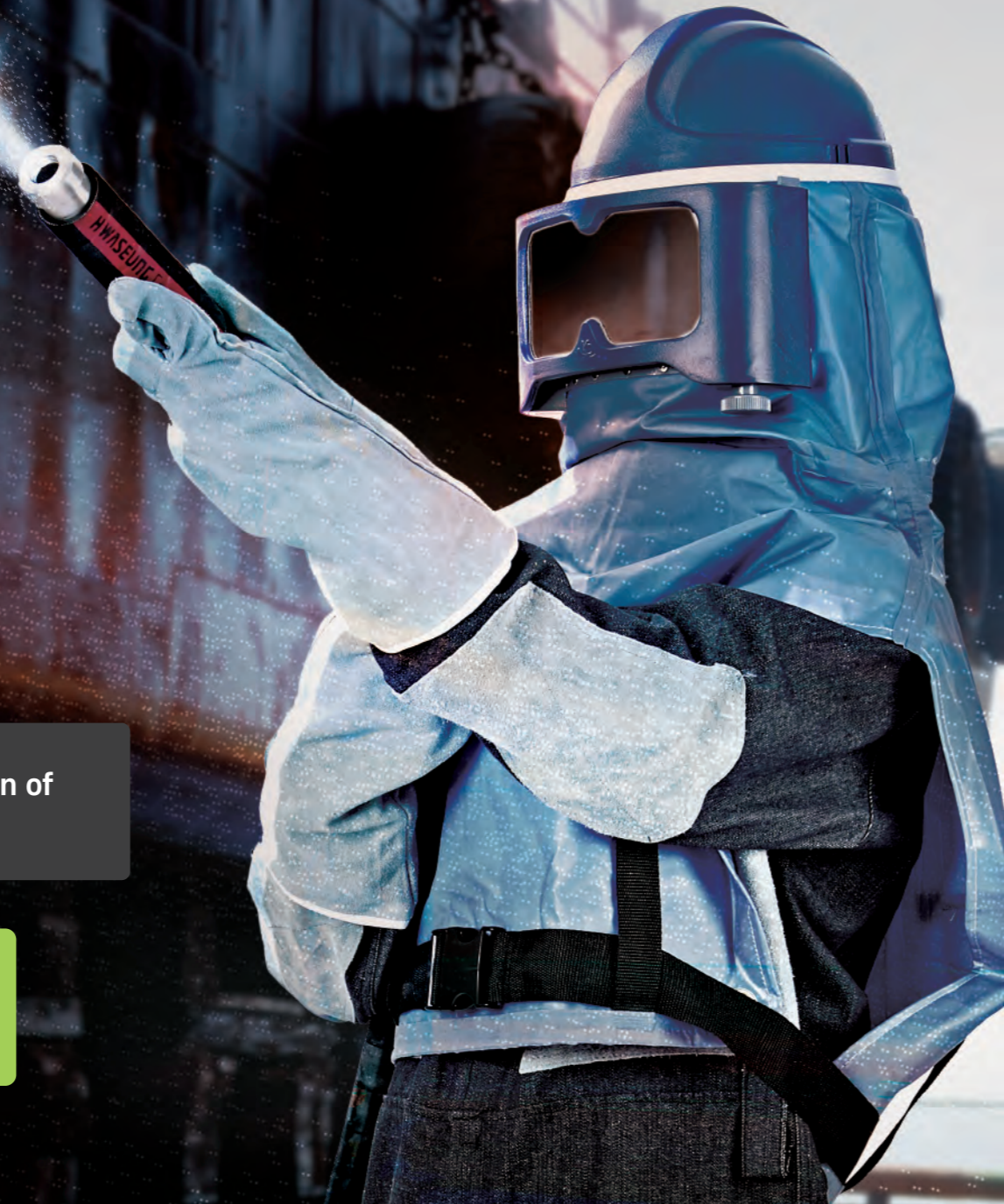
02 SUPPLIED AIR RESPIRATOR

New type SAR with
Film-winding system
Silencer and
Air filter

Lens than 80db noise

Weight reduction of
products

Patented Film-Winding System



KD-510N

Painting / Grinding / Abrasive Blasting | 



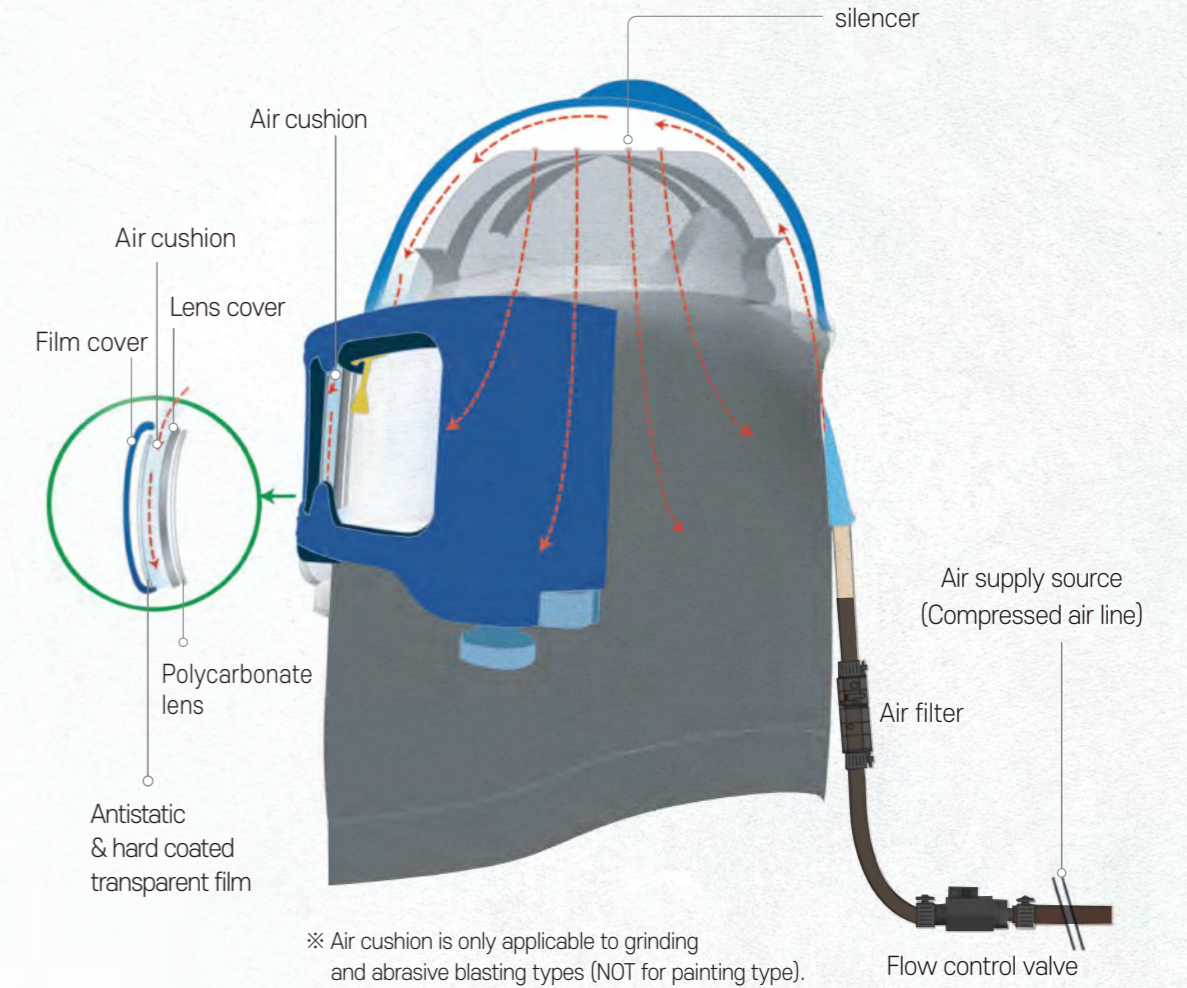
Film winding system
(patented)



Film winding
by a ratchet type lever



Locking device
(lever type)



KD-510N Painting

Application : Painting

Material

Helmet : ABS
Hood : Urethan + T/C
Goggle part : PC

Respirator type

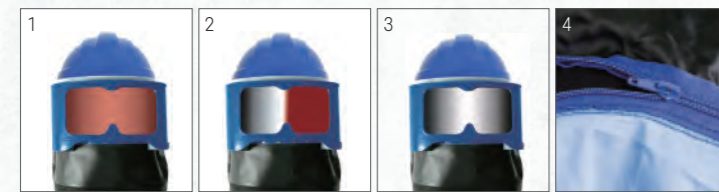
Continuous flow compressed
air line breathing device

Country of Origin

Republic of Korea



TEST



1 Contaminated goggle part

2 Winding the film

3 Clear view after film winding

4 Detachable hood

KD-510N Grinding

Application : Grinding

Material

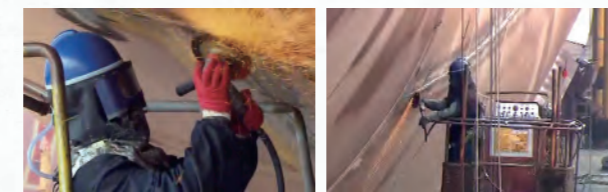
Helmet : ABS
Hood : Urethan + Cotton
Goggle part : PC

Respirator type

Continuous flow compressed
air line breathing device

Country of Origin

Republic of Korea



Actual application example at site

KD-510N Blasting

Application : Abrasive Blasting

Material

Helmet : ABS + Urethane
Hood : Urethan + Nylon
Goggle part : PC

Respirator type

Continuous flow compressed
air line breathing device

Country of Origin

Republic of Korea



Actual application example at site

KD-509N FR

Application : Grinding

Material

Helmet : ABS
Hood : Urethan + Cotton
Goggle part : PC

Respirator type

Continuous flow compressed
air line breathing device

Country of Origin

Republic of Korea



The lens for KD-509 is easily replaceable by the unique lens replacement mechanism using the levers attached to the goggle part.

KD-507N FR

Application : Grinding

Material

Helmet : ABS
Hood : Urethan + Cotton
Goggle part : PC

Respirator type

Continuous flow
compressed air line
breathing device

Country of Origin

Republic of Korea



KD-507N

Application : Grinding

Material

Helmet : ABS
Hood : Urethan + Cotton
Goggle part : PC

Respirator type

Continuous flow
compressed air line
breathing device

Country of Origin

Republic of Korea



KD-507N-04

Application : Grinding

Material

Helmet : ABS
Hood : Urethan + Cotton
Goggle part : PC

Respirator type

Continuous flow
compressed air line
breathing device

Country of Origin

Republic of Korea



KD-515

Application : Welding, Gouging

Material

Helmet : ABS
Hood : Cowhide
Goggle part : Black Tempered Glass

Respirator type

Continuous flow
compressed air line
breathing device

Country of Origin

Republic of Korea



Lens



Lens for painting(510 only)

Material : Polycarbonate(Hard-coated)
Application : Eye protection
Size(WxL) : 185mm × 110mm
Thickness : 1.0T



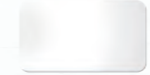
509N(FR) Lens

Material : Polycarbonate(Hard-coated)
Application : Eye protection
Size(WxL) : 304mm × 131mm
Thickness : 1.0T



Lens for grinding/abrasive blasting

Material : Polycarbonate(Hard-coated)
Application : Eye protection
Size(WxL) : 185mm × 115mm
Thickness : 1.0T



507 Lens

Material : Polycarbonate
Application : Eye protection
Size(WxL) : 142mm × 98mm
Thickness : 3.0T

Film



Film for painting(510 only)

Thickness : 50µm
Length : 3.6m(20cut/roll)
Width : 110mm



Film for grinding /abrasive blasting(510 only)

Thickness : 75µm
Length : 2.2m(12cut /roll)
Width : 110mm

Advanced concept filtration system



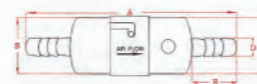
Item : PC filtering device
Material : Polycarbonate
Filter : Sintered filter



Item : Aluminum filtering device
Material : Aluminum
Filter : Sintered filter



Item : Sintered filter



	PC	A	B	C	D	E
PC	105mm	26φ	25.5φ	9.3φ	24.5mm	
Aluminum	105mm	28φ	28φ	9.3φ	24.5mm	

Air-flow control valve

The air flow control valve for KD-510N is designed as dial type to prevent workers from safety accidents caused by falling over surrounding facilities due to valve handles of typical type valves. It is also designed to maintain minimum air supply in case of shut-off in order to eliminate suffocation caused by lack of air supply. The filtering device and the air-flow control valve are compatible with all types of KD-510N.



1/4" type



1/8" type

Item : Air-flow control valve
Material : Aluminum

03 PAINTING GOGGLES



KD-603 Painting

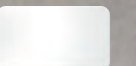


Benefits

- Film Winding Type Clear View Device
- Replaceable Film For Cost Saving (A Film = Approx. 20new clear views)
- Impact-Resistant & Anti-Fog Treated Polycarbonate lens
- A comfortable fit

Lens for painting goggles

- Material : Polycarbonate (anti-fog treated)
- Application : Application Eye protection

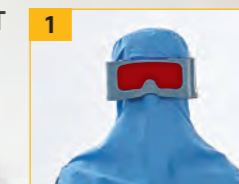


Film for painting goggles

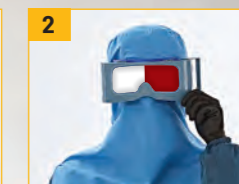
- Thickness : 50µm
- Width : 70mm
- Length : 3.25m(20cut/roll)



TEST



Contaminated goggle part



Winding the film



Clear view after film winding

04 AIR COOLING VEST

*Offering workers Cool air
in work place with hot temperature*

Air Vest

- Breathable mesh fabric
- Optional vest type (half-body, full-body)
- Efficient cooling air distribution by evenly spaced air holes inside the vest
- Size adjustable vest by velcro type fastening

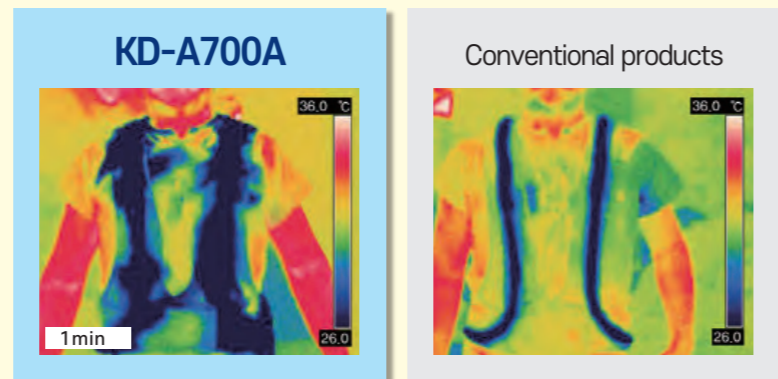
Air conditioner

- "I" shape air inlet for better mobility
- Minimized heated zone at hot-air outlet to avoid possible burns
- No electricity or refrigerant needed
(Cooling by compressed air only)
- Improved cooling capacity (36% better than)
- Ultra-light weight

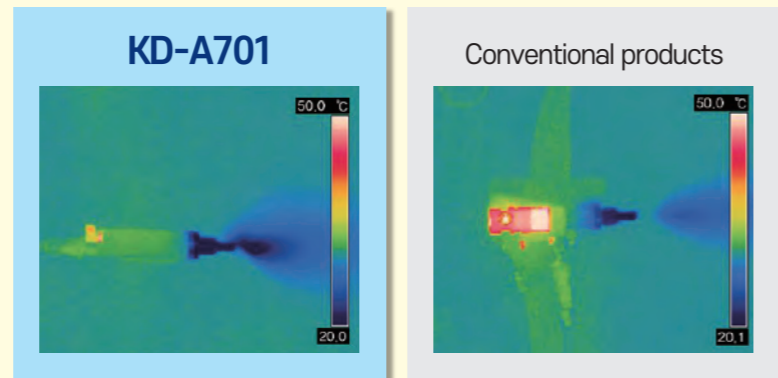
Easy to wear device



Excellent cooling works



Improved hitting problem of cooler



KD-A700A
Item : Air Vest(Half-body type)
Application : For Cooling air distribution
Material : Hose-PVC, Vest-Mesh & Synthetic leather
Size : One size fits all



KD-A700B
Item : Air Vest(Full-body type)
Application : For Cooling air distribution
Material : Hose-PVC, Vest-Mesh & Synthetic leather
Size : One size fits all



KD-A701
Item : Personal Air conditioner(Vortex tube)
Application : Cooling
Material : Nylon66, Aluminum, Steel

05 ERGONOMIC PRODUCTS



- High durable cowhide material
- Excellent elastic reinforced PU foam
- Easily detachable Velcro type fastener
- Protect wearers from musculoskeletal disorders(MSDs) and injuries on the job.



KD-099
Shoulder protector



KD-097
Elbow protector



KD-095
Knee & shin protector



KD-096
Shin protector



KD-098
Knee protector



KD-095
 | Item : Knee & shin protector (Pair)
 | Purpose : Musculoskeletal system protection
 | Applicable fields : Construction, welding, etc.
 | Material : Cowhide & urethane
 | Dimension(WxL) : 180 x 490
 | Size : One size fits all



KD-096
 | Item : Shin protector (Pair)
 | Purpose : Musculoskeletal system protection
 | Applicable fields : Construction, welding, etc.
 | Material : Cowhide & urethane
 | Size : One size fits all



KD-097
 | Item : Elbow protector (Pair)
 | Purpose : Musculoskeletal system protection
 | Applicable fields : Construction, welding, etc.
 | Material : Cowhide & urethane
 | Size : One size fits all



KD-098
 | Item : Knee protector (Pair)
 | Purpose : Musculoskeletal system protection
 | Applicable fields : Construction, welding, etc.
 | Material : Cowhide & urethane
 | Size : One size fits all



KD-099
 | Item : Shoulder protector (Piece)
 | Purpose : Musculoskeletal system protection
 | Applicable fields : Construction, welding, etc.
 | Material : Cowhide & urethane
 | Size : One size fits all

Wear the Safety! Feel the Safety!

Add Functionality as well as Safety with KYONGDO's advanced technology.

ewest®
PRODUCT DESCRIPTION



Research on Ventilation and Ergonomic Effects

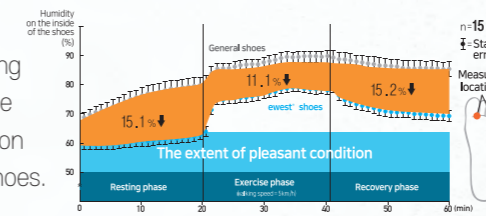
Carried out by
Pohang University of Science & Technology(POSTECH)
Republic of Korea Air Force Academy(ROKAFA)
Kyungpook National University(KNU)

This research was carried out by a joint research team consisting of the professors and the researchers in POSTECH*1, ROKAFA and KNU for 9 years. The team examined the humidity changes, perspiration amount, temperature, muscle load, tiredness and subjective sensation with two groups one in ewest safety shoes and the other in general safety shoes. The findings of the research were presented at the Korean Fashion Industry Conference 2013 and received the "Best Paper Award".

*1 POSTECH was ranked No.1 in 2012 and 2013 among the top 100 universities under 50 years old.(Source : Times Higher Education World University Rankings)

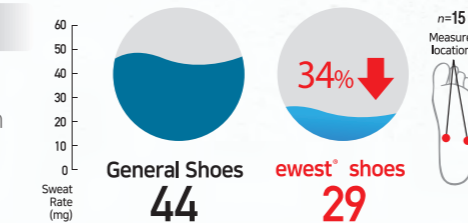
Humidity Changes on the Insides of the Shoes

The ewest® safety shoes showed lower humidity, 15.1% during resting phase, 11.1% during exercise phase and 15.2% during recovery phase on average than the general safety shoes.



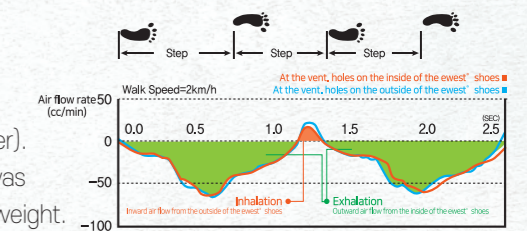
Rate of Perspiration

Sweat inside ewest® shoes was measured 34% on average less than general shoes for ventilation effect and lower humidity.



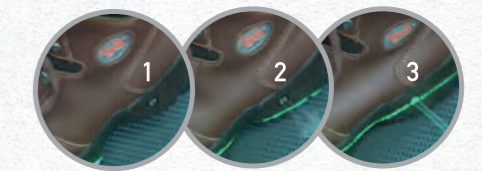
Air Flow Analysis

The air flow rate at the ventilation system on the ewest® shoes was measured using air flow measurement device (consisting of laminar flow rate element, a pressure transducer, AD converter). As the result, 80~125 cc of air flow per minute was measured upon walking speed and pattern and weight.



Air-flow Visualization

Using a Nebelfluid gas generator and a laser, the air flow at the ventilation system of the ewest® shoes was visualized and the test proved the ventilation effect of the patented ventilation system of the ewest® shoes.



06 SAFETY SHOES

Absolutely Comfortable Overwhelmingly Pleasant

KYOUNGDO's products are developed and manufactured under the strict quality management system and in accordance with ISO 9001:2015. KYOUNGDO's products are protected by domestic and international patent law.

*Wear
The Wind*



Plastic Toe Cap

Light weight plastic toe cap having impact and compression resistances protects toes from the falling objects or compression of heavy machineries.

Steel Toe Cap

High strength and wider steel toe cap provides higher impact(upto 200J, 15kN) and compression resistances.

Well ventilated PU Insock

PU insock with the ventilation holes to maximize cushioning and to minimize perspiration and humidity inside the shoe.

Penetration resistant non-metallic insole

An anti-penetration non-metallic insert placed under the midsole in order to protect feet from sharp objects.

P-VENT System

The domestically and internationally patented ventilation system created by ewest® technology dramatically reduces perspiration problem by two-way air circulation mechanism, that is, the fresh air outside of the shoes is entered into the shoes and the warm damp air inside of the shoes is expelled to the outside of the shoes.

Perspiration-Free Safety Shoes

ewest®
PRODUCT DESCRIPTION

K^s Certification of occupational safety & health korean	Zipper Side zipper for easy on and off for the middle and / or high cut safety boot models	Free Loop A patented one-touch buckle system by ewest®	SCREW Dial System
L Light Duty (certified by KOSHA)4.4KN, 500N	General Duty (certified by KOSHA)10KN, 1000N		
G General Duty (certified by KOSHA)10KN, 1000N	Heavy Duty (certified by KOSHA)15KN, 1000N	P Patented Technology Domestically & internationally	
H Heavy Duty (certified by KOSHA)15KN, 1000N	Antistatic Safety Shoes 2nd class (Certified by KOSHA)		

NEW



EW-414D



| Upper : Microfiber / Mesh | Color : Navy | Outsole : Rubber
| Size : KR 230-300/US(M)5-12/EU36.5-46.5/UK4-11 | Midsole : Phylon

NEW



EW-502D



| Upper : Microfiber / Mesh /Action | Color : Light Navy | Outsole : Rubber
| Size : KR 230-300/US(M)5-12/EU36.5-46.5/UK4-11 | Midsole : Phylon

NEW



EW-504D



| Upper : Microfiber / Mesh /Action | Color : Gray | Outsole : Rubber
| Size : KR 230-300/US(M)5-12/EU36.5-46.5/UK4-11 | Midsole : Phylon



EW-203P

Upper : Microfiber / Mesh | Color : Navy | Outsole : Rubber
Size : KR 230-300/US(M)5-12/EU36.5-46.5/UK4-11 | Midsole : Phylon/PU



EW-405P

Upper : Microfiber | Color : Navy | Outsole : Rubber
Size : KR 230-300/US(M)5-12/EU36.5-46.5/UK4-11 | Midsole : Phylon/PU

EW-411N



Upper : Microfiber / Mesh
Size : KR 230-300/US(M)5-12/EU36.5-46.5/UK4-11
Color : Blue
Midsole : Phylon/PU
Outsole : Rubber



EW-406

Upper : Microfiber / Mesh | Color : Navy | Outsole : Rubber
Size : KR 230-300/US(M)5-12/EU36.5-46.5/UK4-11 | Midsole : Phylon/PU



EW-407

Upper : Microfiber / Mesh | Color : Black | Outsole : Rubber
Size : KR 230-300/US(M)5-12/EU36.5-46.5/UK4-11 | Midsole : Phylon/PU



EW-412N

Upper : Cowhide | Color : Brown | Outsole : Rubber
Size : KR 230-290/US(M)5-11/EU36.5-45.5/UK4-10 | Midsole : Phylon/PU



EW-413P

Upper : Microfiber | Color : White | Outsole : PU
Size : KR 225-300/US(M)4.5-12/EU36-46.5/UK3.5-11 | Midsole : PU

EW-514



Upper : Microfiber / Mesh
 Size : KR 240-295/US(M)6-11.5/ EU37.5-46/UK5-10.5
 Color : Navy
 Midsole : Phylon/PU
 Outsole : Rubber



EW-S801



Upper : Microfiber
 Size : KR 245-300/US(M)6.5-12/EU38-46.5/UK5.5-11
 Color : Brown
 Midsole : PU
 Outsole : PU



EW-601-1



Upper : Cowhide | Color : Dark Brown | Outsole : Rubber
 Size : KR 230-300/US(M)5-12/EU36.5-46.5/UK4-11 | Midsole : PU



AIR-5-1



Upper : Cowhide | Size : KR 230-300/US(M)5-12/EU36.5-46.5/UK4-11
 Color : Brown | Outsole : Rubber | Midsole : Rubber(outer) / PU(inner)

EW-804-2



Upper : Cowhide
 Size : KR 230-300/US(M)5-12/EU36.5-46.5/UK4-11
 Color : Dark Brown
 Midsole : Rubber(outer) / PU(inner)
 Outsole : Rubber



***** EU/UK CERTIFIED SAFETY SHOES** **CE** **UK CA** **S3** **SRC**



EW-K601E



| Upper : Cowhide / Mesh | Color : Navy | Toecap : Plastic
 | Size : EU36-48(KR225-315) | Sole : Phylon + Rubber



EW-801E



| Upper : Cowhide(FG)/Twill | Color : Brown | Toecap : Plastic
 | Size : EU37.5-48(KR240-315) | Sole : Phylon + Rubber



EW-602E



| Upper : Cowhide | Color : Wheat | Toecap : Plastic
 | Size : EU36-48(KR225-315) | Sole : Phylon + Rubber

